

PROJECT FACTSHEET

MORE THAN A WOMAN

Strengthening Women's Participation in Politics and Governance (Phase II)

2021-2024



PROJECT DETAILS

DONOR PARTNER: THE GOVERNMENT OF IRELAND , THROUGH THE EMBASSY OF IRELAND IN SIERRA LEONE

IMPLEMENTING PARTNER: SEND SIERRA LEONE

PROJECT LOCATION:

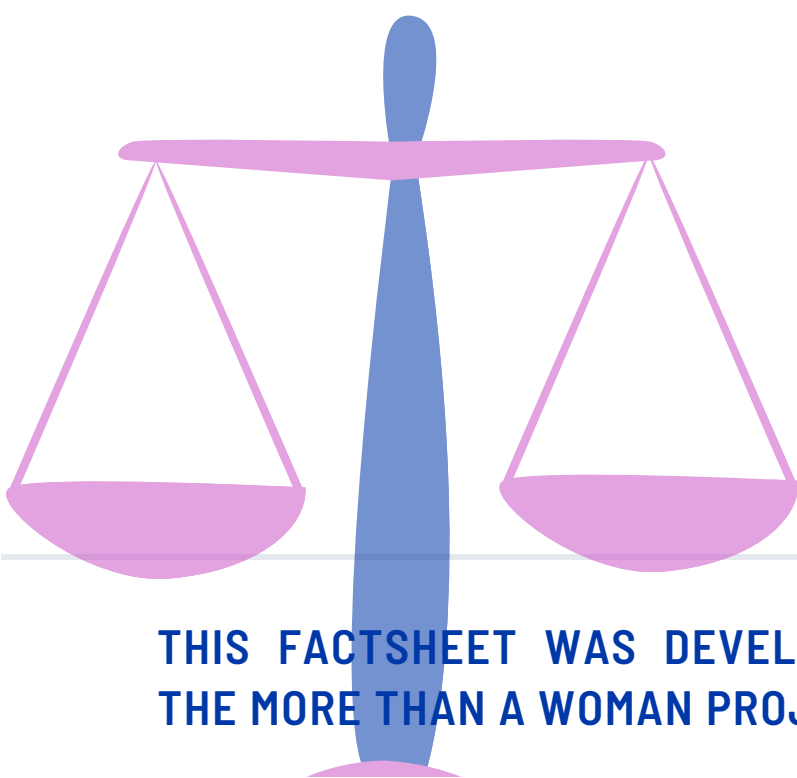
- 1.EASTERN PROVINCE:KAILAHUN, KENEMA AND KONO DISTRICTS
- 2.SOUTHERN PROVINCE:BO AND BONTHE DISTRICTS
- 3.NATIONAL LEVEL ADVOCACY

PROJECT DURATION: JUNE 2021- JULY 2024

PROJECT BUDGET: € 1,650,000

PROJECT THEMATIC AREAS:

1. Women's political empowerment
2. Economic empowerment of women
3. Gender transformative practices



THIS FACTSHEET WAS DEVELOPED WITH FUNDS FROM
THE MORE THAN A WOMAN PROJECT

PROJECT PROBLEM

In Sierra Leone, women constitute only 13% of Parliamentarians, 18% of Local Councilors, and 6.6% of Paramount Chiefs. Scholars have found a direct correlation between participation and voice, on the one hand, and access to socio-economic benefits, on the other. This is evident in Sierra Leone, where the economic and social systems disadvantage women. A staggering 84% of rural and 63% of urban women operate in the informal sector characterized with no social protection, low wages, and poor working conditions. Over 80% of rural women are multi-dimensionally poor, and at least 70% of all Sierra Leone women have experienced gender-based violence in their lifetime.

Woven into Sierra Leone are cultural societies and religious beliefs which impose high social costs on women aspiring to participate and serve in decision-making, governance, and political positions. These reinforce the notion that is the prerogative of men to lead and women to serve as family caregivers only. During the development of this action, 70% of women interviewed indicated that "their religion frowns upon women participating in politics or speaking in public." For centuries these gender roles continued to be strongly guarded, and crossing over would provoke social rebuke, especially for women.

12.4%

**Women Representation
as Parliamentarians**

84%

**of rural women work with no social
protection , earn low wages and poor
working conditions**

70%

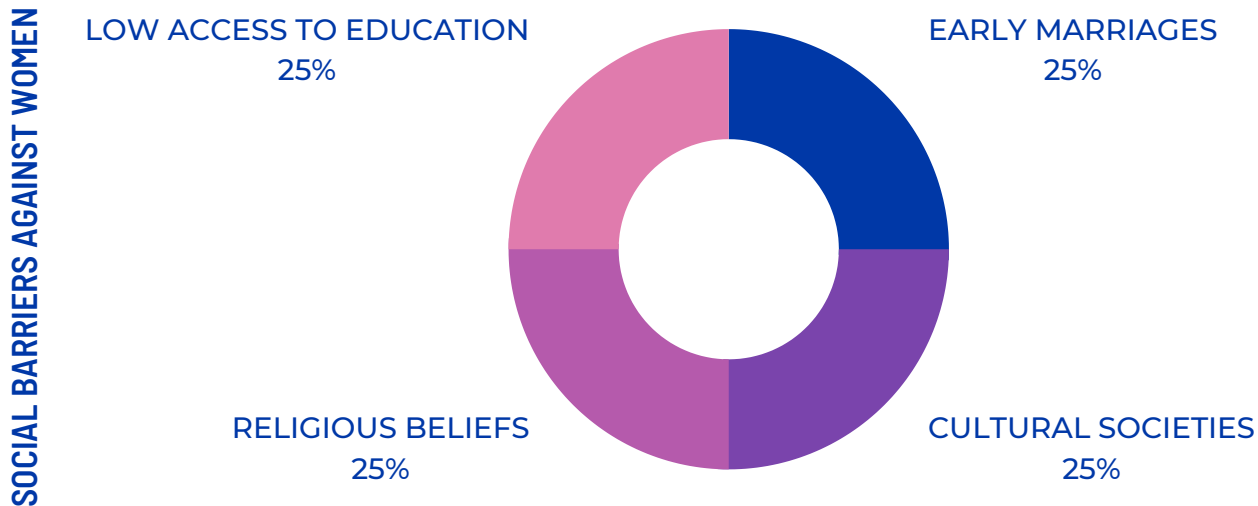
**of women have
experienced Gender Based
Violence in their lifetime**

60–70%

**of young girls are married
before 18 years**

Additionally in Sierra Leone, the unequal and limited access to education opportunities for girls and women compared to boys and men is further worsened by the widespread occurrence of early marriages. Early marriage is the most critical factor preventing women from pursuing education beyond primary school. Across Sierra Leone, 60% of young girls are married before 18 years, and in the eastern districts where this practice is predominant, the incidence is over 70%. Pursuing elected positions requires time away from the home for campaigning and for a society that insists on women being the dedicated caregiver, this trade-off has made it difficult for most men to assist their spouses in pursuing elected positions or becoming active in their communities' decision-making processes. Many female aspirants who contested the 2018 Sierra Leonean general elections indicated that they did not have support of their spouses.

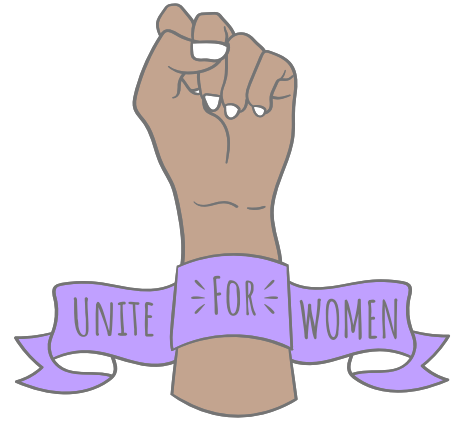
Despite provisions by the 1991 Constitution of Sierra Leone, which affords all citizens the equal right to be involved in politics and governance, and the Truth and Reconciliation Commission's recommendation of 30% female representation in governance and political structures, women are still subjected to institutional and structural barriers which impede their involvement in politics and governance.



Women responded that these are the top four social barriers of women participating in decision-making, governance and politics

PROJECT FOCUS

KEY FOCUS IS ON ATTAINING 4 SDGS



The More than a Woman project is a multi-dimensional action which empowers women to achieve gender equality, develop peaceful and strong institutions whiles creating sustainable income-generating avenues through local resource mobilisation and entrepreneurship to reduce poverty and dependence on men. It contributes to attaining the following Sustainable Development Goals (SDGs) in Sierra Leone.



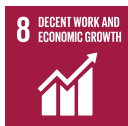
SDG 1: NO POVERTY

Through entrepreneurship, business development, management and local resource mobilisation, the project contributes to creating sustainable livelihoods for households



SDG 5: GENDER EQUALITY

The project builds the capacity of women across areas of governance, politics and decision making to become independent and self-reliant, and transforms socio-cultural stereotypes to promote gender equality



SDG 8: DECENT WORK AND ECONOMIC GROWTH

Through local resource mobilisation, financial support for entrepreneurs, the project supports women to create jobs and sources of income across fields of agriculture, commerce and processing



SDG 16: PEACE, JUSTICE AND STRONG INSTITUTIONS

The project supports the formation and strengthening of women, young girls and men networks to champion women's advancement in decision-making, governance and politics at all levels



INTENDED OUTPUTS

This action incorporates the lessons learned from the first phase of the project (2018-2021), and key measures proposed by detailed studies and learnings including The Cost of Women's Participation in Politics Research and the Gender Audit report.

Findings from stakeholder engagements with the Women and Young Women in Governance Networks across Kailahun, Kenema, Kono, Bonthe and Bo reinforce the notion that the actions delivered in this Phase should strengthen these women networks and their ability to play critical roles in governance within their districts and the nation.

Innovation will guide the development of new strategies to enhance the leverage, reach and impact of this project to achieve an overall increased active participation of women in governance and politics.

FOUR OUTPUTS ARE ESPOUSED FOR SUCCESS



OUTPUT 1

Strengthened women's collective voice, knowledge, capacity on gender, and accountability in politics and governance at the district and regional level

OUTPUT 2

Women are empowered economically through resource mobilisation and utilisation.

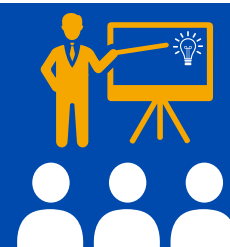


OUTPUT 3

Increased national-level advocacy and networking on women's participation in decision-making, governance, and politics

OUTPUT 4

Enhanced capacity of SEND for effective and result-oriented program delivery



STRATEGY

The project implements a multi-stakeholder approach to achieve its intended outputs which are detailed below:

Work with women networks, female councillors, CSOs, and MPs to represent women's voices and drive change through transforming institutions and processes.

Strengthen and support women's networks to mobilise women groups and their allies to work with a collective voice to ensure the inclusion of women in policy planning and implementation.

Strengthen and support young women's networks to mobilise young women and their allies to work with a collective voice to ensure the inclusion of young women in decision-making, governance, and politics.

Mobilise and educate men, women, and political party leaders and members on gender and inclusion for women in decision-making, governance, and politics.

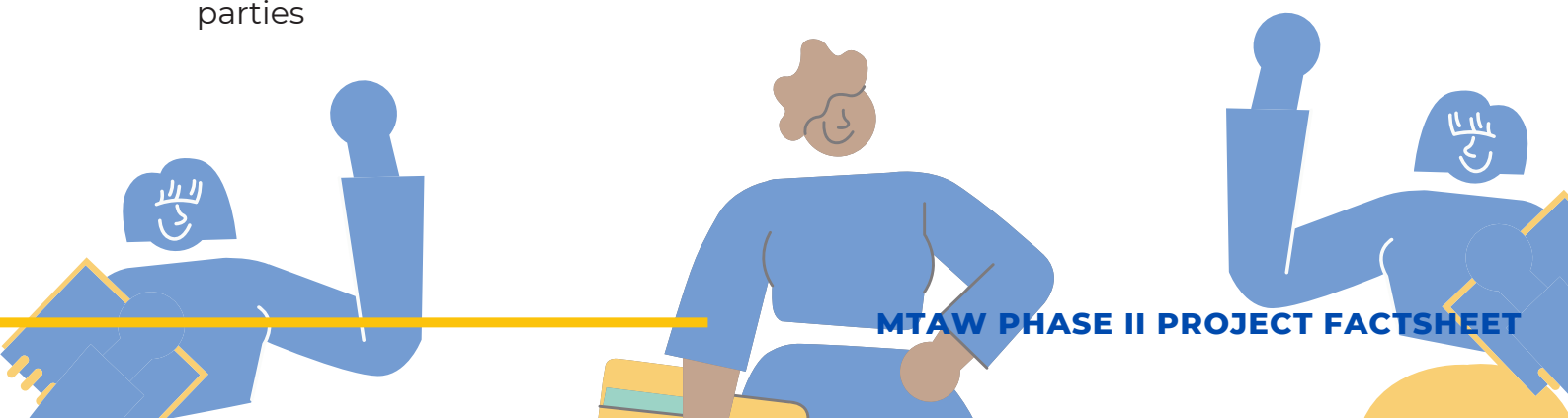
Partner with district/city councils and line ministries to promote gender equality and women's participation in decision-making, governance, and politics: women in each of these governing structures will demand change to create gender-sensitive environments

Integrate the media in major significant activities on an ongoing basis to serve as a vital catalyst for the popularisation and mobilisation of gender issues by reporting on injustice and inequality and providing the space and platform for women to be empowered champions of their rights.

OUTPUT 1: STRENGTHENED WOMEN'S COLLECTIVE VOICE, KNOWLEDGE, CAPACITY ON GENDER, AND ACCOUNTABILITY IN DECISION-MAKING, GOVERNANCE, AND POLITICS AT THE DISTRICT AND REGIONAL LEVELS

Under this output, we have detailed the activities which would be implemented during the life cycle of the project:

- Sensitization on women's rights to participate in governance at the community, district and national level
- Creation and Awareness-raising on Bonthe Women in Governance Network
- Strengthen and support to all Women in Governance Networks
- Strengthen the district level Women on the Move media programme
- Conduct Gender Audit of Political Parties and Launch the Gender Audit Report
- Advocacy engagements on the findings of the Gender Audit Report
- Bi-weekly radio programmes across six districts
- Establish the Voice of Women (VOW) Radio in the Kenema District
- Strengthen the capacity of the Nyapui Radio
- Establish and strengthen the National Women on the Move (WOM) radio Programme
- Mobilise men as allies and supporters of women's empowerment and participation in decision-making
- Support the development of the 2023 women's manifesto
- Advocacy engagement on the 2023 women's manifesto
- Capacity building of female aspirants and candidates using the content of the Training Manual for Female Aspirants and Candidates
- Political education and development of political awareness
- Quarterly engagement meetings with political parties
- Gender training for local authorities, line ministries, and security personnel in the districts
- Quarterly engagement meetings with political parties
- Facilitate learning and knowledge exchange between eminent women in governance and politics and the women's networks
- Strengthen Young Women in Governance Network
- Exposure and Exchange visits for Young Women in Governance Networks
- Capacity building for traditional leaders and spouses on women's empowerment and participation in leadership, governance and politics
- Post-election dialogue with female aspirants, elected female leaders, and political parties



OUTPUT 2: WOMEN ARE ECONOMICALLY EMPOWERED THROUGH RESOURCES MOBILISATION AND UTILISATION

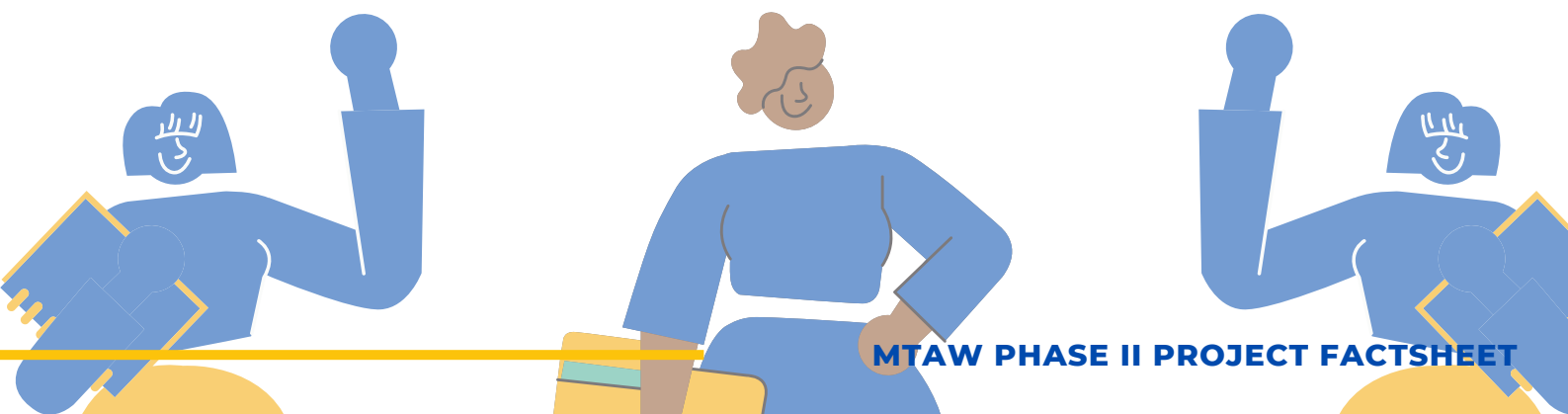
Under this output, we have detailed the activities which would be implemented during the life cycle of the project:

- Awareness-raising on available sources and access to finance
- The formation, networking, and strengthening of VSLA groups
- Monthly monitoring of VSLA groups
- Entrepreneurship and Business education for women
- Setup a Small Business Development Fund to support women enterprises
- Experience sharing and learning sessions among VSLA groups

OUTPUT 3: INCREASED NATIONAL-LEVEL ADVOCACY AND NETWORKING ON WOMEN'S PARTICIPATION IN DECISION-MAKING, GOVERNANCE, AND POLITICS

Under this output, we have detailed the activities which would be implemented during the life cycle of the project:

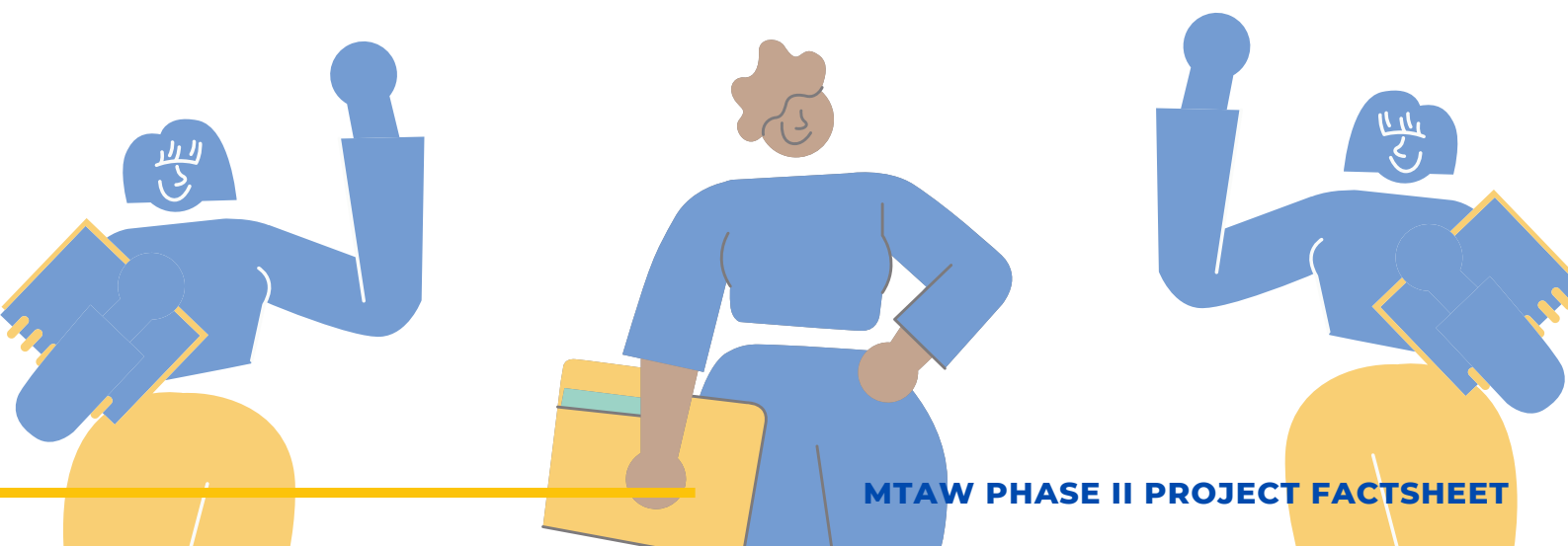
- Power analysis with political parties and local authorities on women's representation in governance
- Annual Women in Governance Leadership Conference
- National "Vote for More Women" Campaign
- National dialogue series on Women in Politics and Governance
- The impact of money on politics
- How to Empower Women to Succeed in Elections
- Engagement on the GE Bill and the White paper on CR



OUTPUT 4: ENHANCED CAPACITY OF SEND FOR EFFECTIVE AND RESULT-ORIENTED PROGRAMME DELIVERY

Under this output, we have detailed the activities which would be implemented during the life cycle of the project:

- Capacity building for SEND staff through assessments and training conducted as and when necessary, either by selected SEND staff or external experts.
- To improve SEND's capacity, leadership and project management training will be done periodical for mid-level managers.
- Resources are allocated under this action to support the organisation's HR and Internal Audit strengthening to increase SEND's capacity to function effectively.
- Support the determination of SEND's financial and administrative management capacity through organisational assessment of SEND finance and administrative systems and practices to determine consolidation areas and address gaps.
- Support the development of SEND organisational risks register
- Review of existing and development of new corporate policies
- Support to SEND communication activities



PROJECT MANAGEMENT ACTIVITIES



District Council and MDA collaboration meetings



Monitoring, Evaluation, and Learning on all project deliverables



Conduct Mid-term and Final Evaluation Assessments and develop Reports



Annual Performance Monitoring activities



Project Steering Committee meetings



Quarterly Partners meetings with Irish Aid: Review progress and address gaps



Monitoring activities of elected councillors and MPs and feedback sessions



Townhall meetings for women councillors and MPs



CHS training

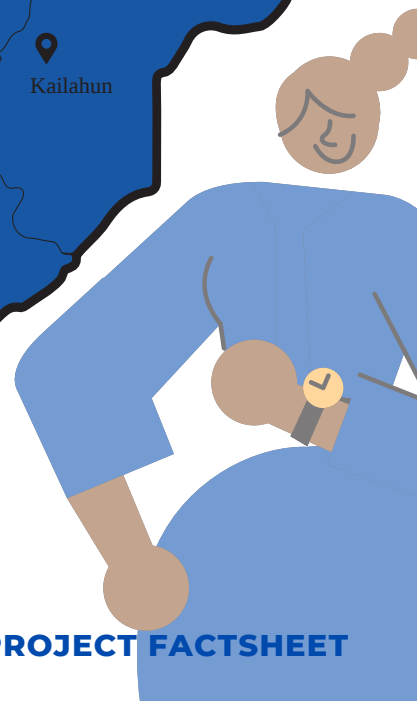
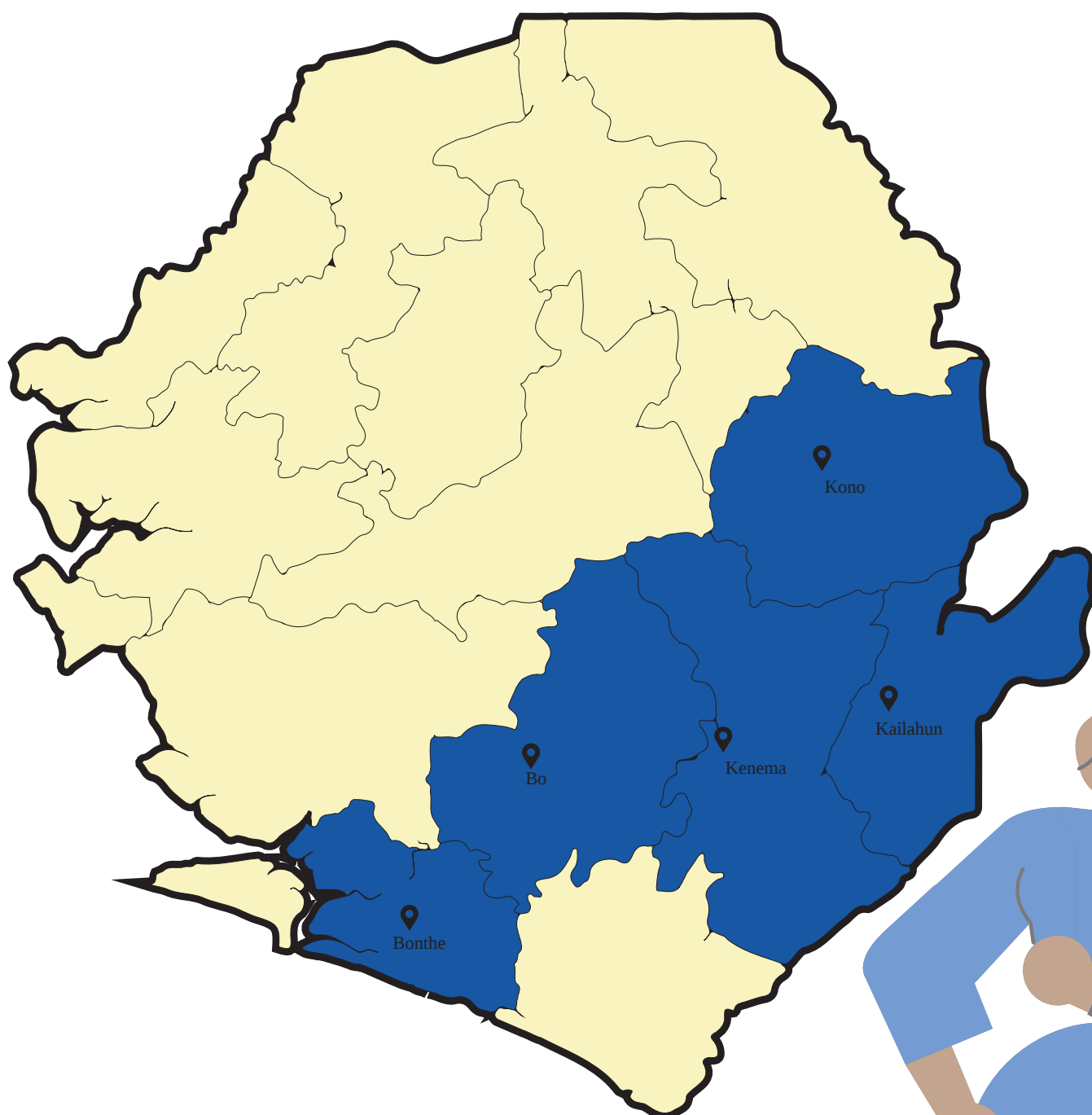
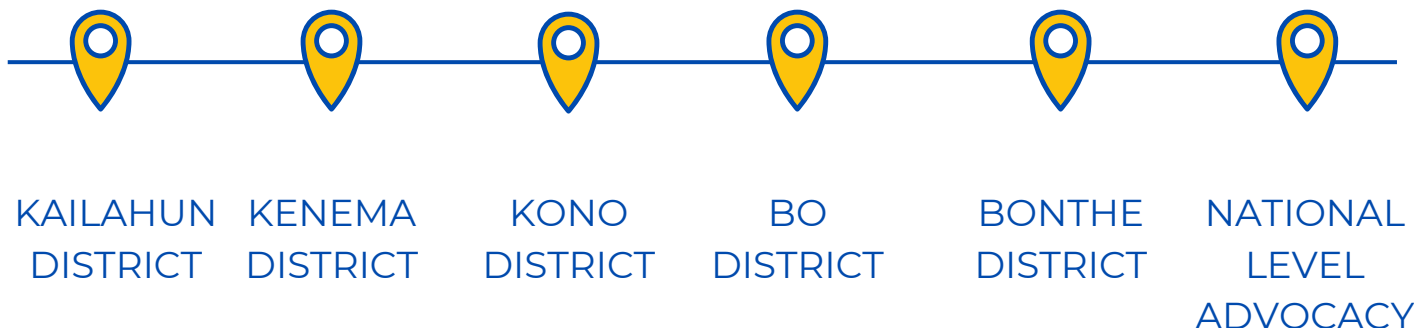


Documentation and publication of best practices



PROJECT LOCATION

The MORE THAN A WOMAN (PHASE II) Project is operational in the following districts across Sierra Leone



TARGET BENEFICIARIES

A total of 48,000 individuals will benefit directly from this action in the Kailahun, Kenema, Kono, Bo and Bonthe districts.

Additionally 1,843,151 beneficiaries will benefit indirectly from the action through National Level Advocacy Engagements.



7 Women Members of Parliament representing 7 Constituencies in the Eastern and Southern regions of Sierra Leone



31 Women Councillors representing 7 Wards in the Eastern and Southern regions of Sierra Leone



34,000 rural women network members and executives



Local radio station staff, 50% of which are women



50 SEND staff, 60% are women, will benefit from improved knowledge in programming, developed M&E systems, and increased resource mobilisation for programme intervention



12,400 women members of Village Savings and Loans Associations across the Eastern and Southern Regions of Sierra Leone



150 Political Leaders

Contact Details

Josephus Ellie, Senior Governance Advisor
Embassy of Ireland in Sierra Leone
josephus.ellie@dfa.ie
+23276107663

Joseph Ayamga, Country Director
SEND Sierra Leone
ayamga@sendsierraleone.com
+23278206853